



Temperature range: **+2°C/+10°C**

Refrigerating unit: **Internal**

Refrigerant/Cooling factor: **R290**

Name	VARIANT 80L 1.0 DP/DU	VARIANT 80L 1.25 DP/DU	VARIANT 80L 1.6 DP/DU	VARIANT 80L 1.88 DP/DU	VARIANT 80L 2.50 DP/DU	VARIANT 80L 3.75 DP/DU
Code	VT100.800L.DP VT100.800L.DU	VT101.800L.DP VT101.800L.DU	VT102.800L.DP VT102.800L.DU	VT103.800L.DP VT103.800L.DU	VT104.800L.DP VT104.800L.DU	VT105.800L.DP VT105.800L.DU
Length [mm]	1000	1250	1600	1875	2500	3750
Height [mm]	2000±15	2000±15	2000±15	2000±15	2000±15	2000±15
Depth [mm]	800	800	800	800	800	800
Capacity [dm ³]	633	791	1012	1190	1582	2373
Display area [m ²]	2,29	2,86	3,66	4,3	5,72	8,59
Total Display Area (TDA) [m ²]	1,36	1,70	2,18	2,58	3,41	5,13
Temp. range [°C] (+2 ± +10°C)	(+2 ± +10°C)	(+2 ± +10°C)	(+2 ± +10°C)	(+2 ± +10°C)	(+2 ± +10°C)	(+2 ± +10°C)
Temp. class	3H1	3H1	3H1	3H1	3H1	3H1
Climate class	3 (25°C ; 60% RH)	3 (25°C ; 60% RH)	3 (25°C ; 60% RH)	3 (25°C ; 60% RH)	3 (25°C ; 60% RH)	3 (25°C ; 60% RH)
Energy efficiency class	B	B	B	B	B	B
Refrigerant	R290	R290	R290	R290	R290	R290
Rated voltage [V]	230/50Hz	230/50Hz	230/50Hz	230/50Hz	230/50Hz	230/50Hz
Rated power [W]	608	817	1138	1101	1496	2201



The presented class applies to selected device modules. The classes for the individual modules may differ. The indication of the energy class for the selected device configuration is given on the attached label.

Standard equipment

internal unit

dynamic cooling (ventilated)

automatic off-cycle defrosting

automatic evaporation of condensate

electronic temperature controller with digital display

IGLOO

powder coated display area

IGLOO pattern book

rows of adjustable shelves

LED lighting

upper internal - IGLOO pattern book

energy saving EC fans

powder coated external housing

IGLOO pattern book

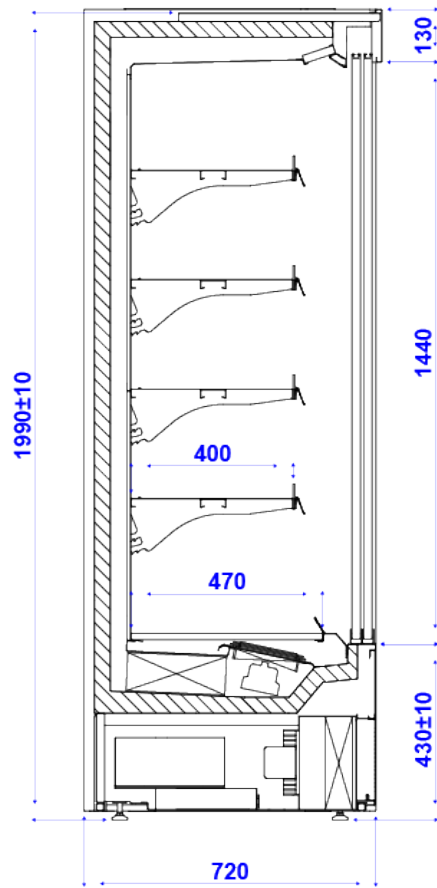
price stripes

IGLOO pattern book

manual night blind	not included for variants DP/DU/DR
shelf fence	
powder coated side panels	IGLOO pattern book
ecological polyurethane foam insulation	
audible alarm on the condenser pollution	

Options

device without side panels prepared for multiplexing (MOD/A)
powder coated side panels with mirror - selectable colour (IGLOO pattern book)
double combined glass side panels - selectable colour (IGLOO pattern book)
powder coated partition panel with mirrors - selectable colour (IGLOO pattern book)
fixed partition made of plexiglass
powder coated display area - custom powder - (after consultation with the IGLOO Sales Department)
INOX display area
INOX AISI304 display area
powder coated external housing - custom powder - (after consultation with the IGLOO Sales Department)
INOX external housing
INOX AISI304 external housing
additional shelf LED lighting - selectable colour (Igloo pattern book)
additional vertical LED lighting (variants DP/DU)- selectable colour (Igloo pattern book) model 1.0 / 1.25 - 2 pcs. ; 1.6 / 1.88 / 2.50 - 4 pcs. ; 3.75 - 6 pcs.
top panel illuminated with LED light - different plexiglass colors available (IGLOO pattern book)
top mirrors
meat hooks - long
set of wheels (model 1.0 / 1.25 / 1.6)
electric night blind
powder painted evaporator
automatic defrost



VARIANT 70L.DP